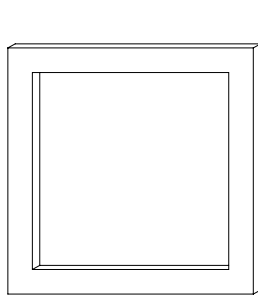
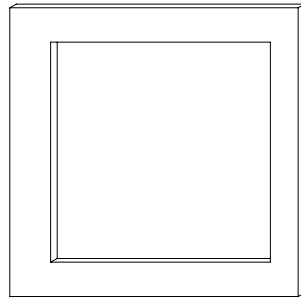


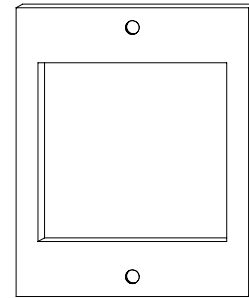
INSTALLATION FOR CUB CONTROLLER PANELMOUNT KITS



PMKCC1



PMKCC2



PMKCC3

Three panelmount kits for the CUB Controller are available to replace most existing miniature presettable counters on the market today. Kits come complete with adapter plates coated with a durable flat black polyurethane finish, mounting hardware, and gaskets to provide a complete sealed unit that meets NEMA 4/IP65 specifications when properly installed.

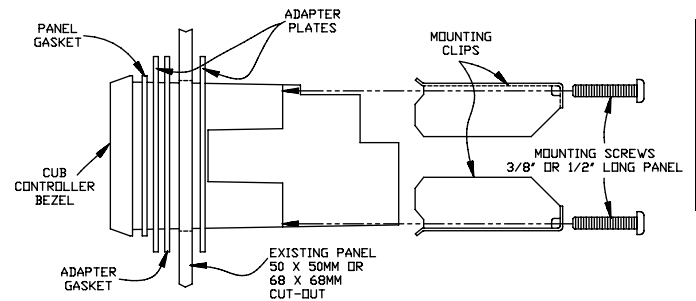
PMKCC1 & PMKCC2

These panelmount kits adapt the CUB Controller to either a 50 mm x 50 mm or a 68 mm x 68 mm panel cut-out. The kit consists of two metal panel adaptors, one neoprene gasket and 2 3-48 x 1/2" screws. The adapter plates and gasket are pinched between the front bezel of the counter and the mounting clips (*provided with the controller accessory bag*). The 1/2" long screws may be necessary for thicker panel installations.

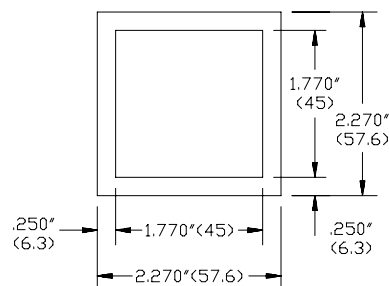
Note: If room permits, install signal connector after unit is mounted. If there is not enough room, pull the wires through before installing as described below:

1. Pull signal connector through the following items in order:
 - a) One panel adapter plate.
 - b) Through existing panel opening.
2. Slide the following items onto the counter.
 - a) Panel gasket
 - b) Adapter plate
 - c) Adapter gasket
3. Install connector in the Cub Controller. Ensure connector is in proper orientation i.e. lockslots visible when viewed from below the case.
4. Slide counter through panel cut-out from the front, and center in the panel opening.

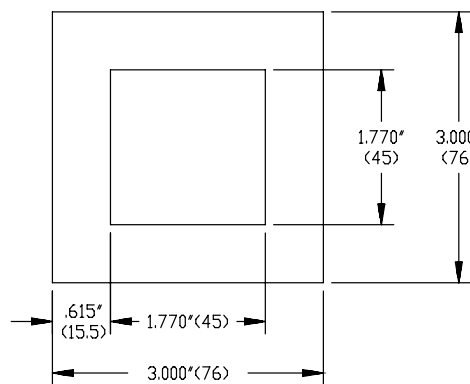
5. Install mounting clips (*one on either side*) with the screws provided. Tighten the screws moderately to "pinch" the gaskets and panels between the front bezel and the mounting clips. (*Mounting clips are provided in accessory bag.*)



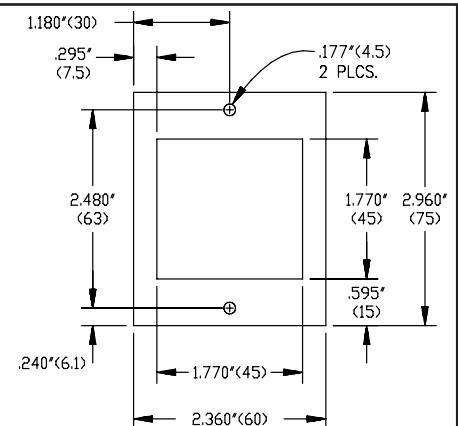
DIMENSIONS In inches (mm)



PMKCC1



PMKCC2

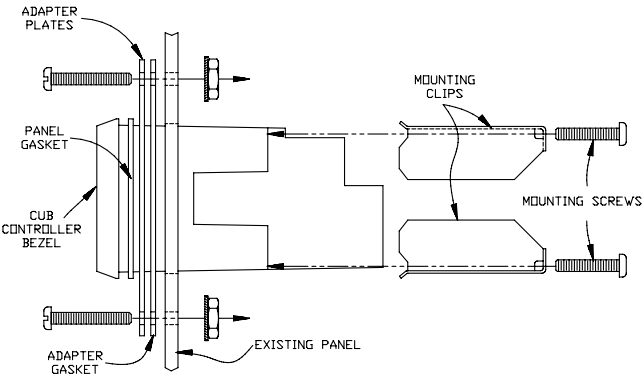


PMKCC3

PMKCC3

For mounting proceed as follows:

1. Slide panel gasket over back of counter. (*Gasket is supplied in accessory bag with counter.*)
2. Slide counter onto adapter plate.
3. Slide adapter gasket onto counter.
4. Attach counter to adapter plate with two mounting clips and screws. (*Both mounting clips are supplied in accessory bag with counter.*)
5. Install connector in the Cub Controller. Ensure connector is in proper orientation i.e. lockslots visible when viewed from below the case.
6. Place complete assembly over existing cut-out, lining up the adapter plate mounting holes with existing holes.
7. Use two mounting screws and nuts provided with Panel Adapter Kit to secure panel to existing cut-out.



ORDERING INFORMATION

MODEL NO.	DESCRIPTION	PART NUMBER
PMKCC1	3-PIECE KIT permits mounting in existing 1.97" X 1.97" (50 mm x 50 mm) panel cut-outs O.A. 2.27" x 2.27" (57.6 mm x 57.6 mm)	PMKCC100
PMKCC2	3-PIECE KIT permits mounting in existing 2.68" x 2.68" (68 mm x 75 mm) socket box panel cut-outs, (72 mm x 72 mm DIN bezel opening) O.A. 3" x 3" (76 mm x 76 mm)	PMKCC200
PMKCC3	2-PIECE KIT permits mounting for existing 2.36" x 2.95" (60 mm x 75 mm) socket box panel cut-outs O.A. 2.36" x 2.96" (60 mm x 75 mm) Hole Centers 2.48" (63 mm)	PMKCC300